



Resilience Mining Mongolia

Investor Presentation

July 2021

Looking to
discover and
develop large
near surface
copper and gold
projects in the
Southern Gobi
Copper-Gold Belt



Disclaimer

This document has been prepared by Resilience Mining Mongolia Limited ("RMM", the "Company") and is provided as a basic overview of the Company. It is current as at 16 June 2021. The information in this presentation is of general background. It does not purport to be all-inclusive or to contain all the information that you or any other party may require to evaluate the prospects of the Company. None of the Company, any of its related bodies corporate or any of their representatives assume any responsibility for, or makes any representation or warranty, express or implied, with respect to the accuracy, reliability or completeness of the information contained in this document and none of those parties have or assume any obligation to provide any additional information or to update this document. This presentation is not investment or financial product advice (nor tax, accounting or legal advice) and is not intended to be used as the basis of making an investment decision. Investors should obtain their own advice before making any investment decision. The tenements as described in this presentation are at various stages of exploration, study and development. Potential investors should understand that mineral exploration, development and mining are high-risk undertakings. There can be no assurance that exploration, study, development or mining of the tenements, or any other tenements that may be acquired in the future, will result in economic ore deposits. Even if an apparently viable deposit is identified, there is no guarantee that it can be economically exploited. This document contains statements which may be in the nature of forward-looking statements. No representation or warranty is given, and nothing in this presentation or any other information made available by the Company or any other party should be relied upon as a promise or representation, as to the future condition of the respective businesses and operations of the Company.

To the maximum extent permitted by law, RMM, its related bodies corporate (as that term is defined in the Corporations Act) and the officers, directors, employees, advisers and agents of those entities do not accept any responsibility or liability including, without limitation, any liability arising from fault or negligence on the part of any person, for any loss arising from the use of the presentation or its contents or otherwise arising in connection with it.

Not a Disclosure Document

The investment opportunity outlined in this basic company overview, is not a "prospectus" or a "disclosure document" and as such does not contain all the information that a full "prospectus" or a "disclosure document" would include. This overview is intended for sophisticated investors, professional investors, person(s) or entities who may have an initial interest in acquiring securities in "RMM" or persons associated to "the Company".

Unlisted

The Company is currently an unlisted Australian Public Company. Whilst at the time of preparation of this document the intention of the Directors is to eventually list the Company on the ASX or any other similar exchange the Company reserves the right to stay unlisted. A risk exists that the company is not successful, and you could lose all your funds invested. This is not an offer document.

Exploration Target

Exploration Targets are reported in accordance with Clause 17 of the 2012 Edition of the Australasian Code for Reporting of Exploration Results, Mineral Resources and Ore Reserves (the JORC Code). This means that potential quantity and grade is conceptual in nature, and there has been insufficient exploration to define a Mineral Resource. It is uncertain if further exploration will result in the determination of a Mineral Resource. Where Russian-style Mongolian resources and reserves are stated, they are not in compliance with JORC standards and are not directly comparable with JORC classifications.

Competent Person Statement

The information in this report that relates to Mineral Resources reported according to the the JORC Code is based on information compiled by Mr David Larsen, who is a Member of the Australian Institute of Geoscientists. Mr Larsen is the Principal of D&J Larsen Consulting Pty Ltd. He is a technical consultant to the Company and is also a shareholder in the Company. He has sufficient experience relevant to the style of mineralisation and type of deposit under consideration and to the activity he is undertaking to qualify as a Competent Person, as defined in the JORC Code. David Larsen consents to the inclusion of the matters based on this information in the form and context in which they appear.

All other information in this report that relates to exploration results and mineral resources and reserves is based on information provided by third parties.

None of that information has been verified by RMM or by a Competent Person as defined in the JORC Code.



Resilience Mining Mongolia



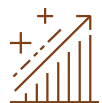
Who are they

Formed by an independent group of experienced exploration, mining and finance professionals



Experience

Reviewed 160+ mineral projects in Mongolia. Board/management with significant Mongolian experience



Strategy

Acquiring potentially world class copper and gold assets and corporate, project/technical and geology teams in the Southern Gobi Copper-Gold Belt from Kincora. Kincora will receive a 9.9% interest in RMM on listing



Funding

The Company intends to use capital raised from an ASX listing to fund Southern Gobi Copper-Gold Belt exploration





Investment Opportunity



Over \$13m spent on exploration has driven significant early results, providing investors with a genuine brownfields resource delineation play



Copper and gold assets with significant potential. Initial drilling, **including 661m @ 0.35% Cu**, supports one of the largest copper and gold systems in Mongolia



Location provides strategic advantage. Closely located near Rio Tinto's Oyu Tolgoi copper and gold mine



Presence in Mongolia. Significant presence in Mongolia and prepared to drill on listing



Experienced team. Highly regarded management and Board with significant experience operating in Mongolia





Investment Highlights

Quality portfolio of Mongolian copper and gold investment opportunities

- RMM to acquire 80% share of Kincora's Mongolian copper/gold exploration licenses:
 - **Drilling highlight: 661m @ 0.35% Cu, 0.08g/t Au, 0.01% Mo from 339m, incl 37m @ 0.83% Cu, 0.14g/t Au, 0.04% Mo**
 - Initial drilling supports **one of the largest copper and gold systems in Mongolia**
 - **Consistent mineralisation across drilling campaign** (Out of 175 holes drilled to date, 29% had 1 g/t Au intersections)
 - 14% of the 4,566 rock chip samples taken contain over 1 g/t Au
 - Early stage and tightly constrained exploration target of 416,428 Mt at 0.26 - 0.30%. 1,689 km landholding explored and refined to 321 km
- Kincora's **large proprietary database; 10 years of data gathering and analysis from majors**
- Acquiring Kincora's exploration team, equipment and administration in Mongolia
- RMM's strategy is **to discover and develop large near surface copper and gold project, while partnering to explore the deeper porphyry projects**





Investment Highlights

Close proximity to Rio Tinto's world-class Oyu Tolgoi copper and gold mine

- Open pit mining began in 2011 and is expected to ramp up to 480 kt Cu and 340 koz Au pa from 2028 to 2036. Open pit ore reserves of 832 Mt at 0.44% Cu and underground ore reserves of 450 Mt 1.52% Cu
- Red Well on trend from the world class Oyu Tolgoi mineralised system (26 km)

Strong in country presence

- Capable and experienced personnel on ground in Mongolia
- Strengthened by Kincora's Mongolian exploration, technical and administration teams

Experienced management and Board with extensive Mongolian experience

- Board and Management with extensive in-country and minerals experience across a range of listed companies including Anglo American, BHP, Newmont and Normandy



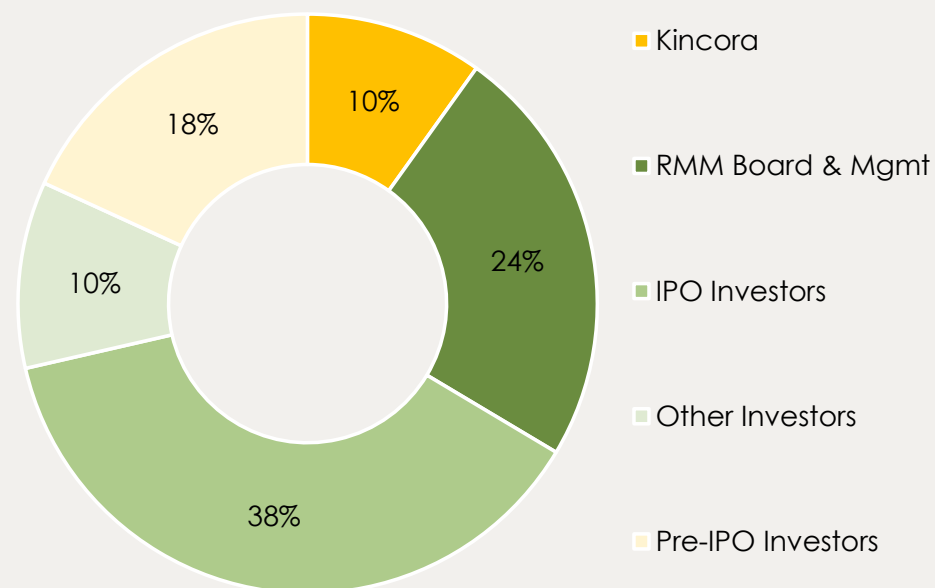


Company Overview

Capital Structure

IPO Price	\$0.20
Current Shares Outstanding	34.1m
Offer Amount	\$5.0m
Shares to be Issued	25.0m
Shares on Issue Post-IPO	66.1m
Pro-forma Market Capitalisation	\$13.2m
Pro-forma Cash	\$4.9m
Pro-forma Debt	\$0.1m
Implied Enterprise Value	\$8.4m

Pro-Forma Post-IPO Ownership Structure





Board & Key Support Personnel

Australia



Executive Chairman
Mark Stewart

+34 years of legal and commercial experience, particularly in junior mining in Africa, North America and APAC. 10 years as an executive for Anglo American plc. Currently Chairman at ASX listed Desert Metals Ltd, and previously Chairman of another ASX listed company. Previous Managing Director experience at two ASX listed exploration companies.



Executive Director
Peter Reynolds

+45 years experience in minerals in Australia and overseas. Held senior positions with Normandy Mining Ltd, Newmont Australia Ltd and BHPB Olympic Dam Operations. He has been a Director of several ASX Listed, TSXV Listed and private companies. 17 years in country experience.



Non-Executive Director
Sam Spring

President and CEO of Kincora. During his time at Kincora, he has led four corporate transactions. He is Vice Chair of the Business Council of Mongolia's (BCM) Resources and Environment Working Group.



Non-Executive Director
Walter Richards

+25 years of finance and commercial experience in mining. Previously CEO for an ASX listed junior and Regional VP Finance, Africa for Newmont Mining Corp. Currently Head of Finance for SIMEC Mining.



Board & Key Support Personnel

Mongolia



Non-Executive Director **Batbayar Purevjargal**

+20 years experience in banking and finance in London and Mongolia. 10 years with the European Bank for Reconstruction and Development as representative in charge of the natural resources sector for Mongolia.



Country Manager Mongolia **Glen Ainsworth**

+40 years experience in Australia, Africa, Saudi Arabia and Mongolia in mining projects. He has held senior positions with Alcoa, Ivanhoe Mines, and Rio Tinto. 15 years in country experience.



Head Geologist **Molor Erdenebat**

+10 years of metal exploration and mining experience, with roles at Trafigura, Erdene Resource Development and Solomon Resources in Mongolia and Africa.



Project Generation Geologist **Tsolmon Amgaa**

Economic geologist with +20 years experience in mineral exploration, most recently with Vale as Senior Geologist, and prior to that a number of juniors in Mongolia and internationally.



Timeline - Resilience Mining Mongolia



2016

- Formed by a group of exploration, mining and finance professionals in Mongolia and Australasia



2021

- Pre-IPO raise
- ASX Listing
- Acquiring assets and corporate, project/technical and geology teams in the Southern Gobi Copper-Gold Belt from Kincora



2021 to 2023+

- Explore and define initial resources near surface
- Grow the exploration target and convert to an initial resource; up to 350m in depth
- Joint Venture with a major to explore the deep porphyries; 500m+ in depth



2016 to 2021

- Reviewed +160 mineral projects in Mongolia
- Settled on Kincora assets



Opportunity - Mongolia

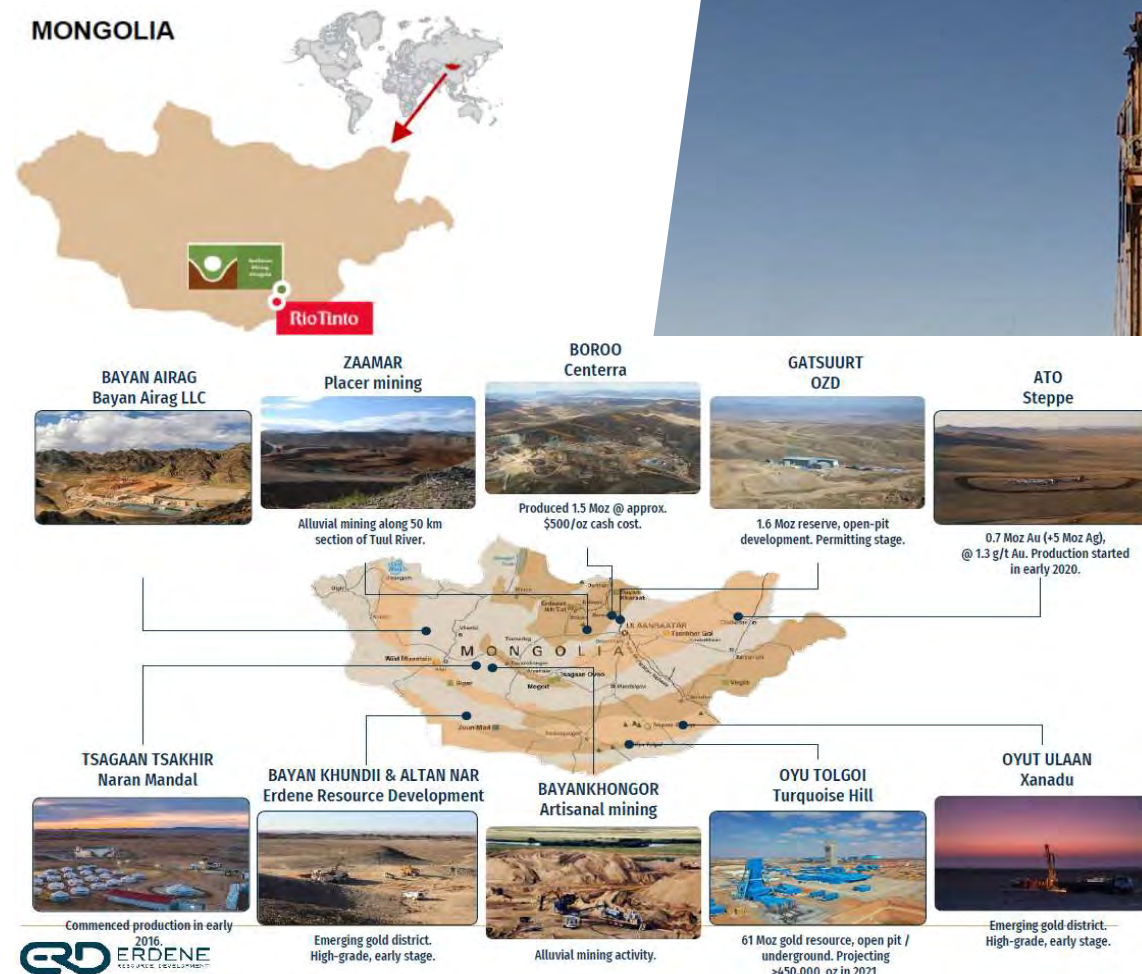
Emerging Mining Region

- Mining represents **~50% of FDI 1H FY20**
- Mining represents **21% of GDP** and **85% of exports**. 70% of the country's land is **under-explored**
- +40,000 mining professionals; 97% of Oyu Tolgoi's ~15,000 staff are Mongolian

Competitive Regulatory Regime

- 5% gold royalty rate and 25% corporate income tax. Double tax treaty with more than 20 nations
- Stabilisation certificates provide certainty of current tax rates for seven years

Source: Eredene Resource Development corporate presentation 1st quarter 2021





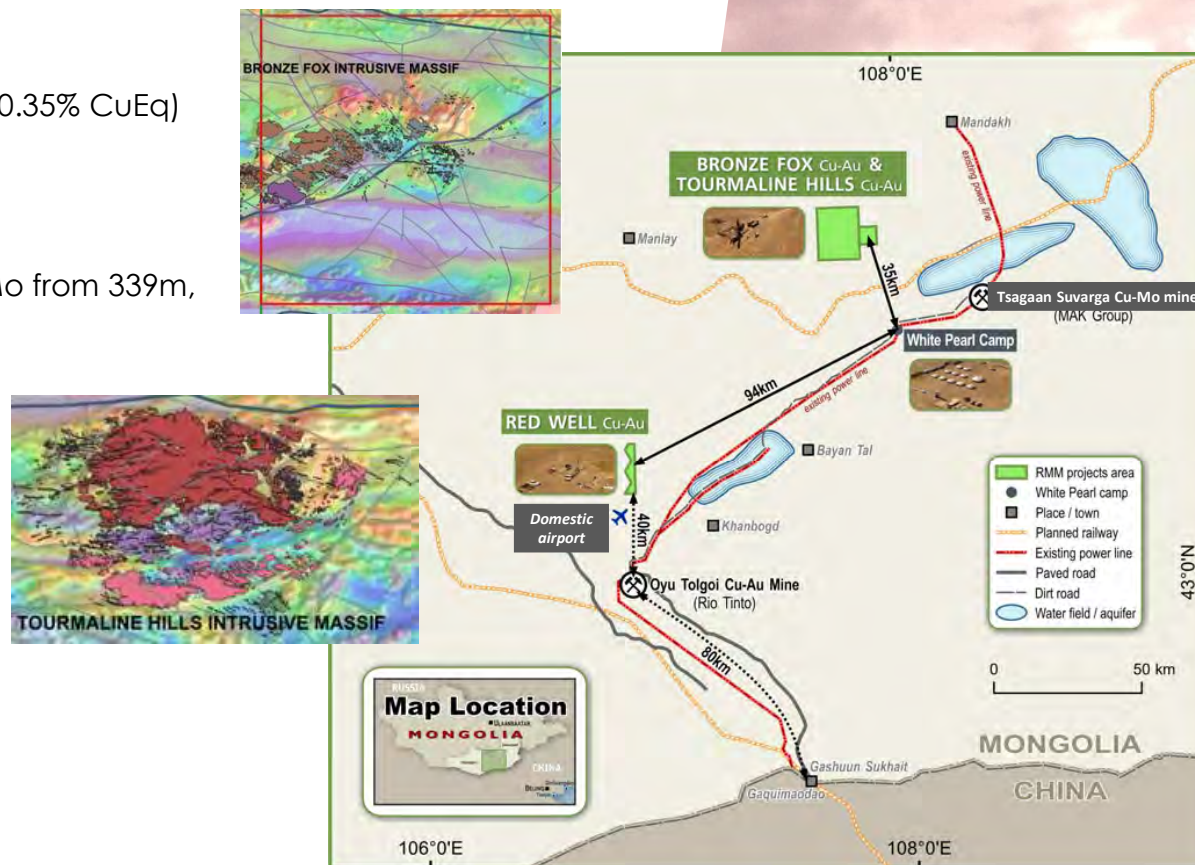
Key Projects Acquired from Kincora (Adj RMM Licenses)

Bronze Fox: Large Cu/Au porphyry and near surface

- 416-428 Mt @ 0.26-0.30% Cu and 0.06-0.07 g/t Au (0.30-0.35% CuEq)
- 2.4km by 1.4km footprint, to a depth of 1km
- Scope to quickly upgrade to JORC Resource
- Drilling highlight: 661m @ 0.35% Cu, 0.08g/t Au, 0.01% Mo from 339m, incl 37m @ 0.83% Cu, 0.14g/t Au, 0.04% Mo
- 7.6 Mt @ 0.25% oxide Cu Exploration Target
 - Desktop studies completed
 - Test work indicates 70% soluble Cu in oxides
 - RMM to provide SX/EW project experience

Tourmaline Hills: Large, Cu/Au intrusive complex

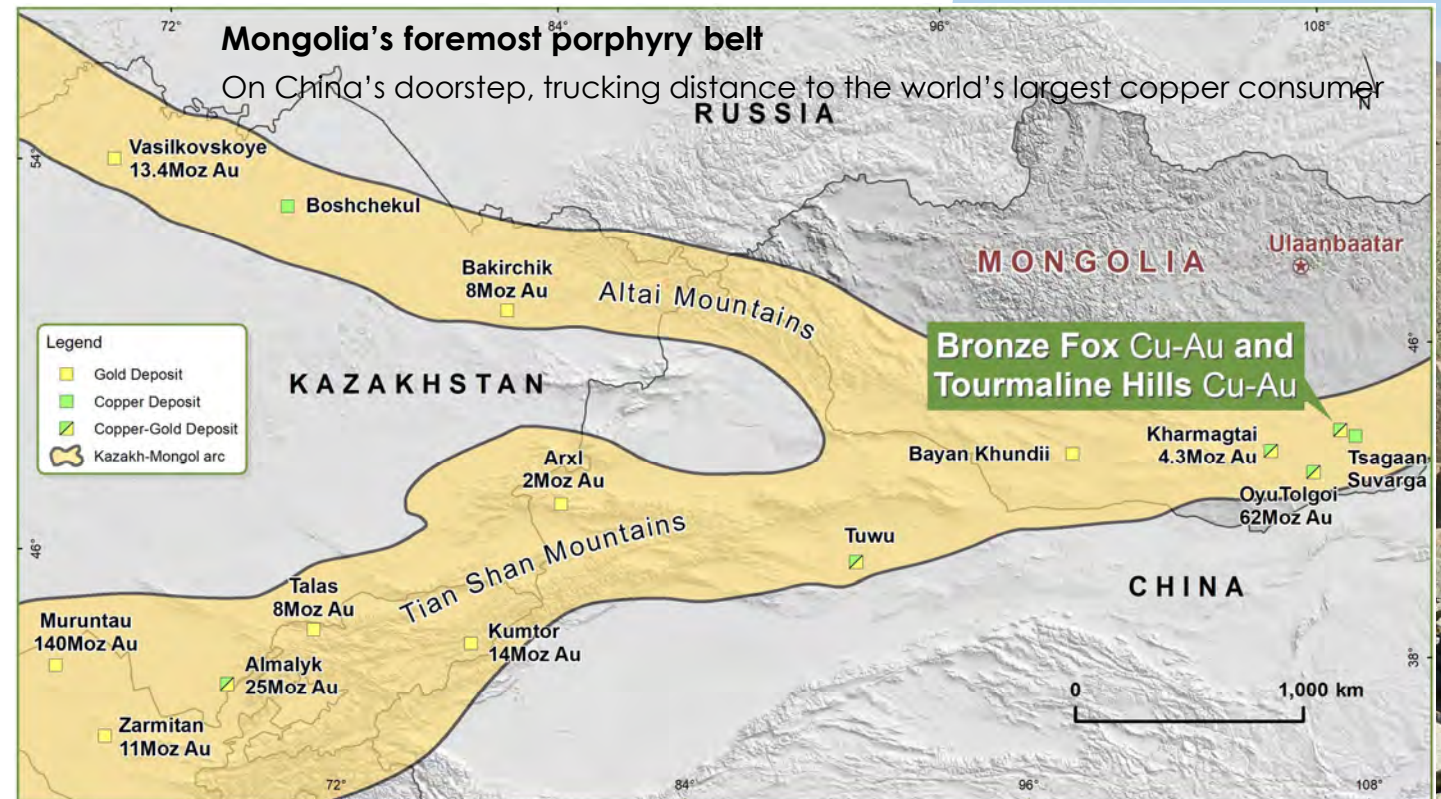
- Limited drilling and informal mining activities to date
- 179 samples >1 g/t Au (max 126 g/t), with Ag, Cu, Pb
- Rock chip samples:
 - 14% +1 g/t Au
 - 2% +10 g/t Au





Eastern Central Asian Orogenic Belt

- ✓ One of the world's **fastest developing mining** regions
- ✓ Major copper-gold deposits in the Tian Shan Gold Belt
- ✓ **Limited exploration** has produced multiple gold, copper and molybdenum deposits, including Rio Tinto's Oyu Tolgoi deposit in southeast Mongolia

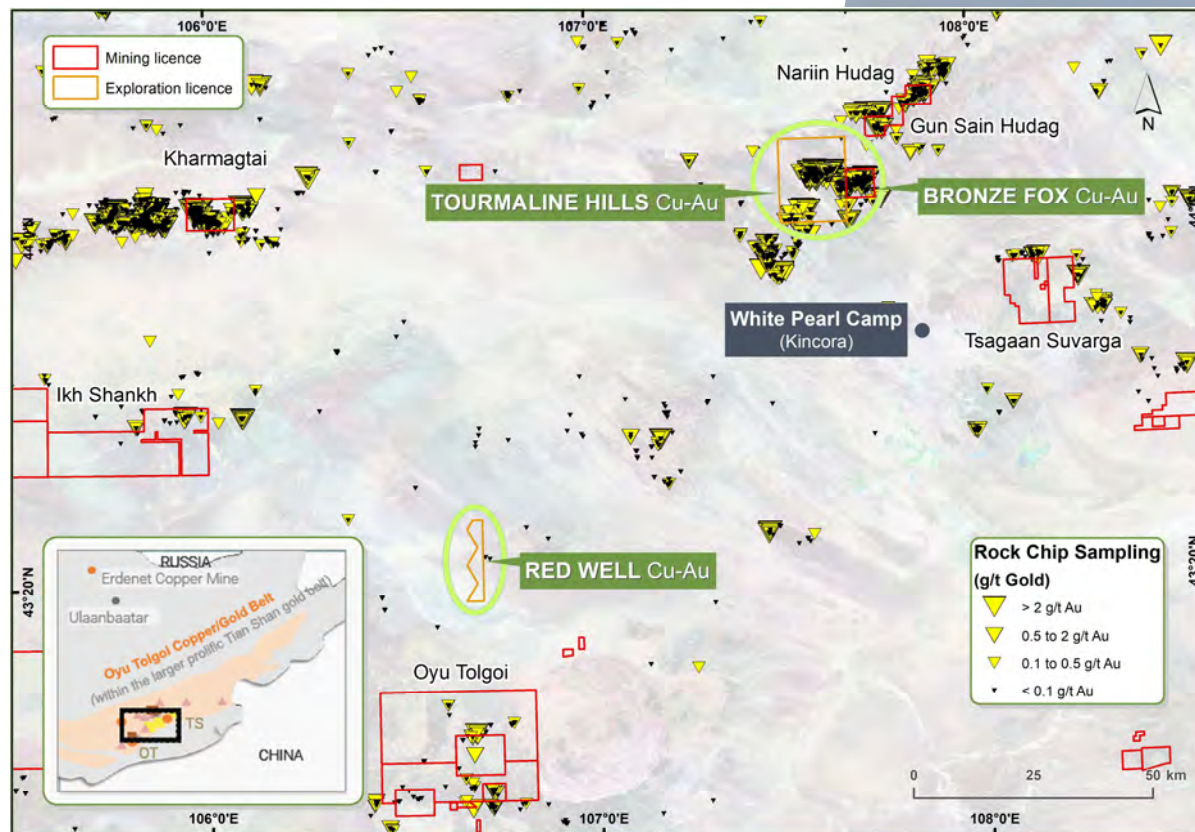




Southern Gobi



- **>85Moz gold and ~50Mt copper endowment (R. Schodde 2019¹)**
- Oyu Tolgoi gold-copper porphyries (>78Moz Au and >43Mt Cu¹)
- Kharmagtai gold-copper porphyries (~5.3Moz Au and ~2.2Mt Cu¹)
- Tsagaan Suvarga copper-molybdenum porphyries (~1.5Mt Cu and 60,000t Mo¹)
- Bronze Fox copper-gold porphyry (~1.2Mt Cu and ~0.9Moz Au¹)



**Highly-mineralised,
vastly underexplored**

¹ Bespoke 2019 request by Richard Schodde from MinEx Consulting for Kincora Copper providing Mongolia and Central Asian Orogenic Belt project level database.

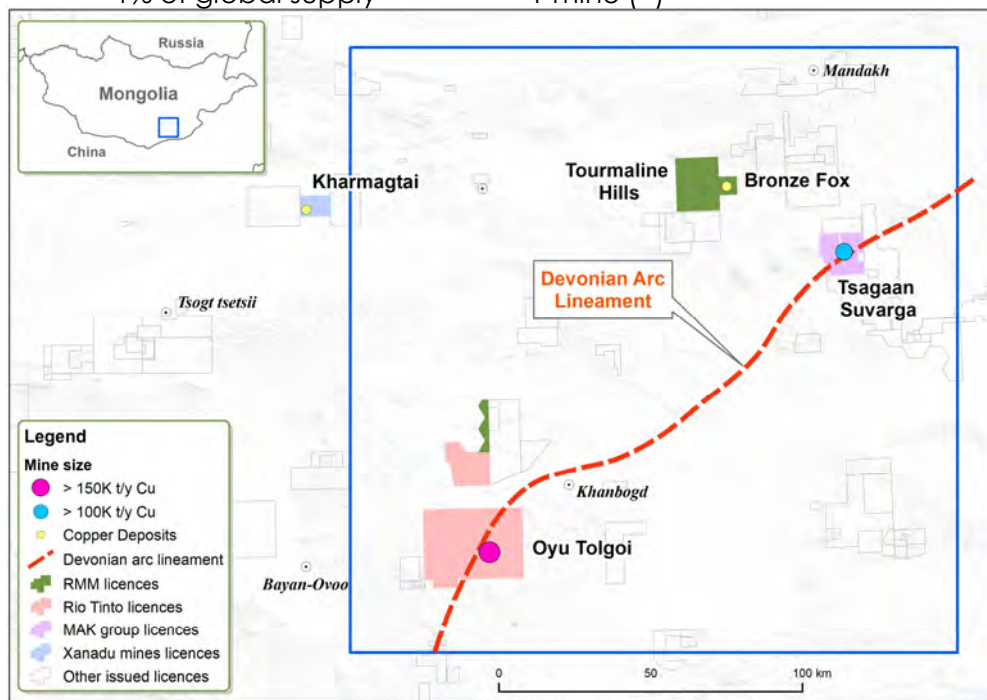


Southern Gobi

Mongolia: Limited exploration has produced multiple copper, gold and molybdenum deposits including Rio Tinto's Oyu Tolgoi deposit

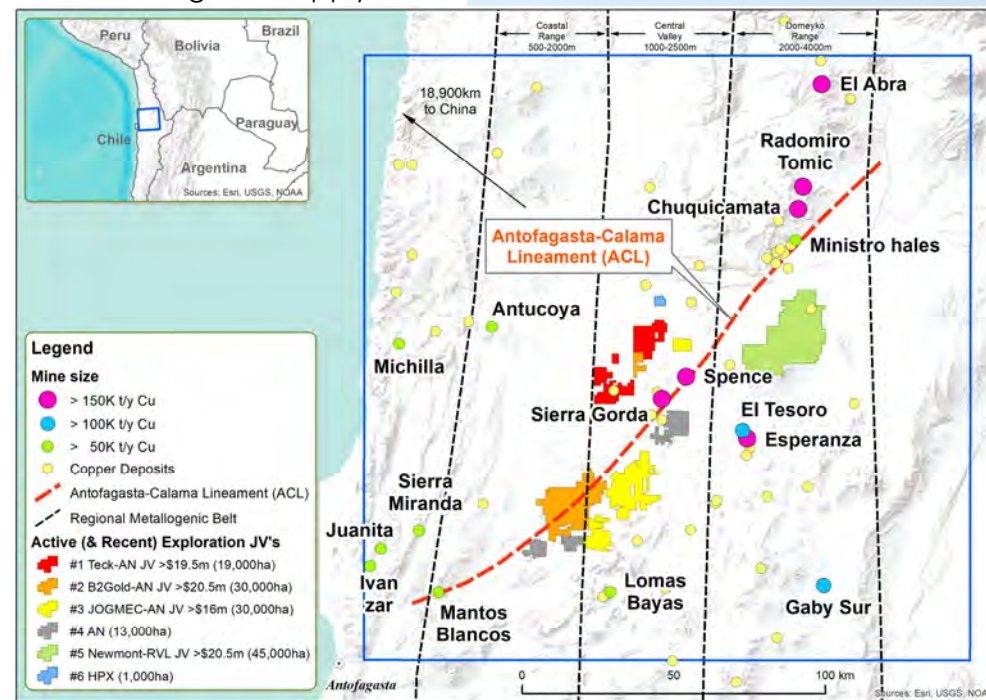
Mongolia

- >5 years production
- ~1% of global supply
- Increase production
- 1 mine (+)



Chile

- >100 years production
- >10% global supply
- Less production
- >15 mines



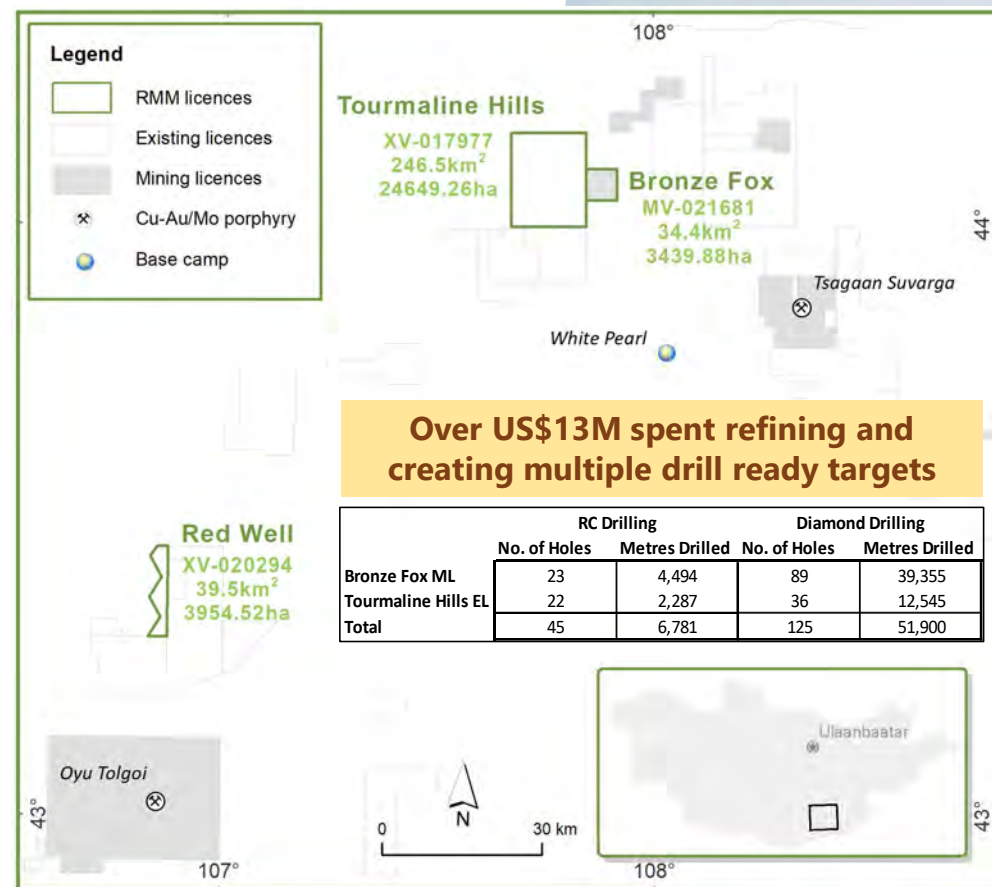


Southern Gobi – Copper & Gold Portfolio

3 Licences Retained – with camp and regional dataset across Southern Gobi

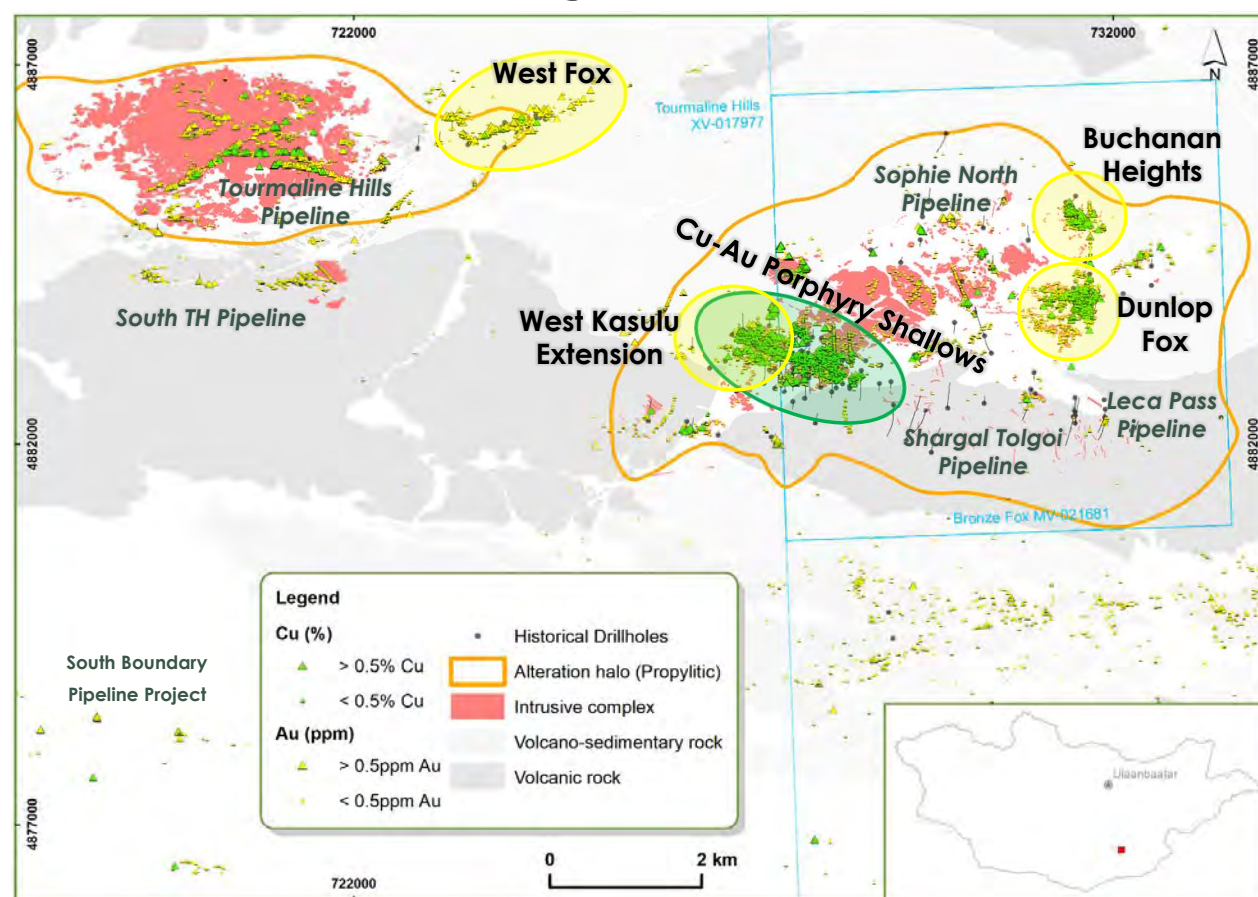
- Peak landholding of 13 licenses covering 1689km² explored and refined to 3 licenses covering 321km²
- Kincora has retained one of the largest land packages in the Southern Gobi, including two large copper and gold intrusive systems
- Bronze Fox: recently secured a mining license (30-year term) with 428Mt @ 0.3% Cu in block model¹
 - Limited drilling supports one of largest copper systems in Mongolia
 - Previous 37m @ >1% CuEq within 794m @ 0.4% CuEq
- Tourmaline Hills: large, outcropping gold-copper intrusive complex with limited drilling and informal mining activities
- Red Well: on trend from the world-class, 26km strike, Oyu Tolgoi mineralised system

¹ Bespoke 2019 request by Richard Schodde from 1 West Kasulu.; The potential quantity and grade ranges are conceptual. There has been insufficient exploration to define a mineral resource and it is uncertain if further exploration will result in the target being delineated as a mineral resource.
For further details on Bronze Fox refer to: November 18th, 2019 & June 26th, 2019 press releases Consulting for Kincora Copper providing Mongolia and Central Asian Orogenic Belt project level database.





Exploration Target Pipeline

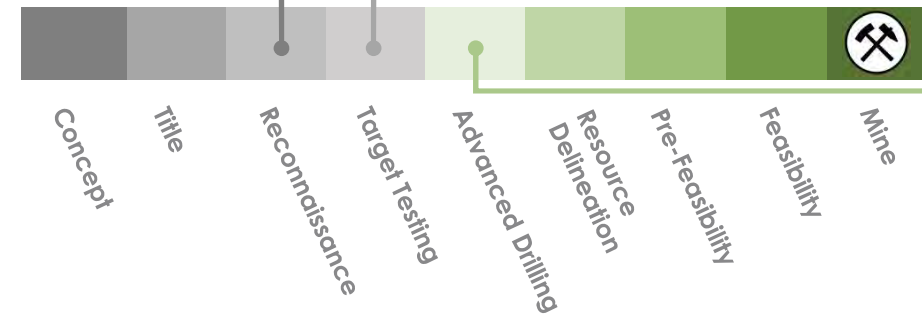


Porphyry Prospects (Cu±Au):

1. West Kasulu Extension
2. Dunlop Fox
3. Tourmaline Hills
4. South Boundary

Porphyry Related Epithermal (Au±Pb-Zn):

5. West Fox
6. Buchanan Heights
7. Shargal Tolgoi
8. Leca Pass
9. Sophie North
10. South Tourmaline Hills





Significant Potential

The two intrusive's may contain all 3 types of porphyry related zones

Epithermal, quartz-carbonate-base metal-gold zones

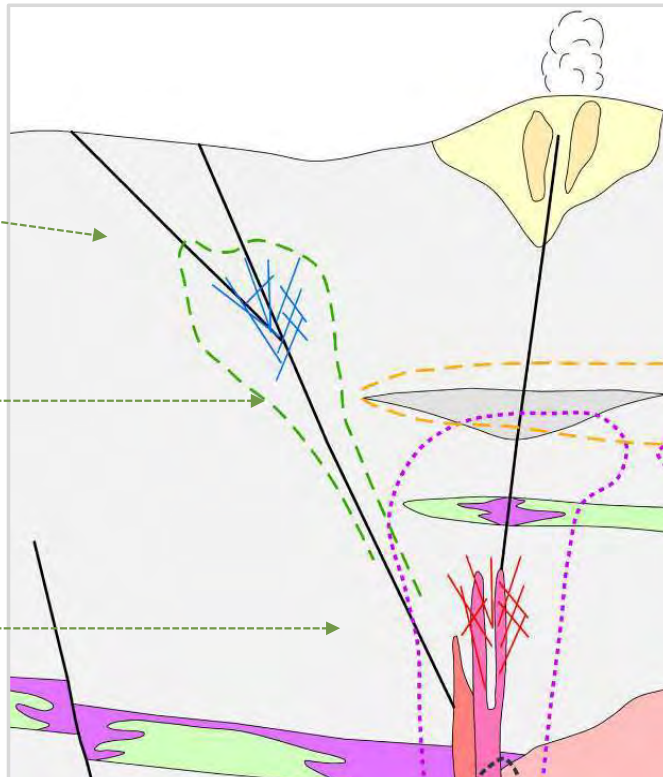
Cowal

Skarn target zones

**Cadia, Northparkes
Grasberg, Ok Tedi**

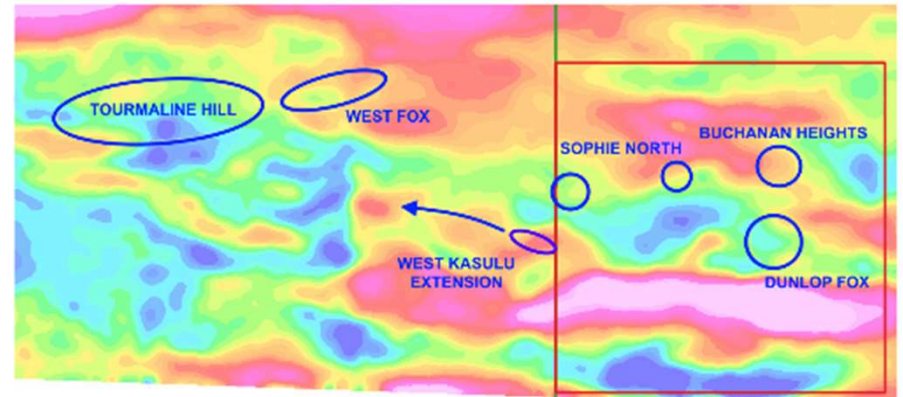
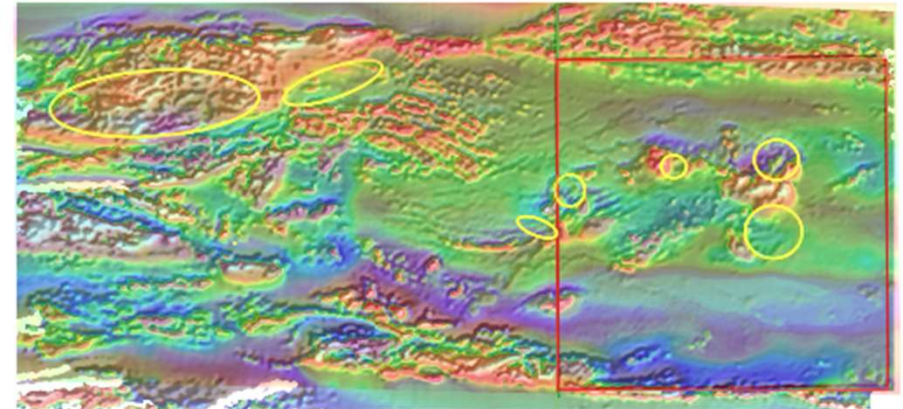
"Finger porphyry" targets

**Cadia, Northparkes
Grasberg, Ok Tedi,
Bingham, Red Chris**



TOTAL MAGNETIC INTENSITY

Colour scale from blue – magnetic low to red – magnetic high

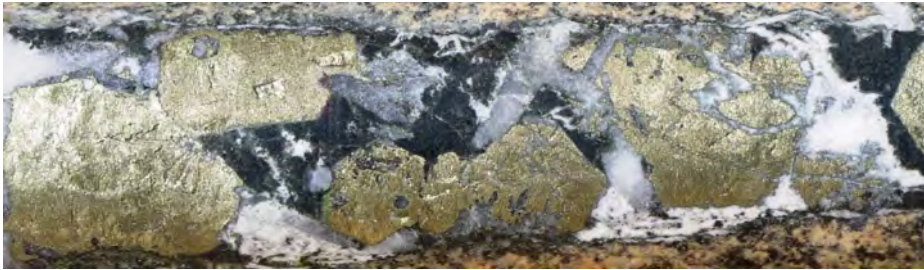


INDUCED POLARISATION (IP) CHARGEABILITY

Colour scale from blue – low chargeability to red/purple – high chargeability



Previous drilling significant grades at West Kasulu



F62

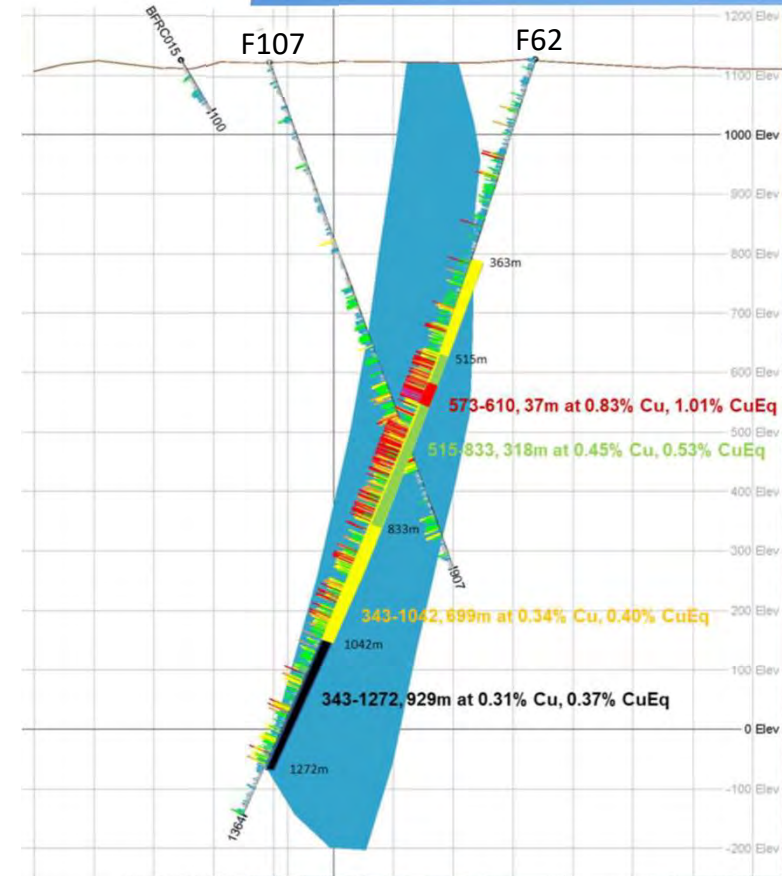
- ✓ 3.12% Cu, 0.32g/t Au & 467 ppm Mo
- ✓ 929 metres @ 0.37% CuEq, with 37 metres @ 1% CuEq

F57

- ✓ 1.67% Cu, 0.20g/t Au & 27 ppm Mo
- ✓ 173 metres @ 0.30% CuEq

F85

- ✓ 1.41% Cu & 0.15g/t Au
- ✓ 10 metres @ 1.48% CuEq





Copper & gold systems on leases

West Fox

130 samples >1 g/t Au
(max 282g/t), with Ag,
Mo, Pb, Zn

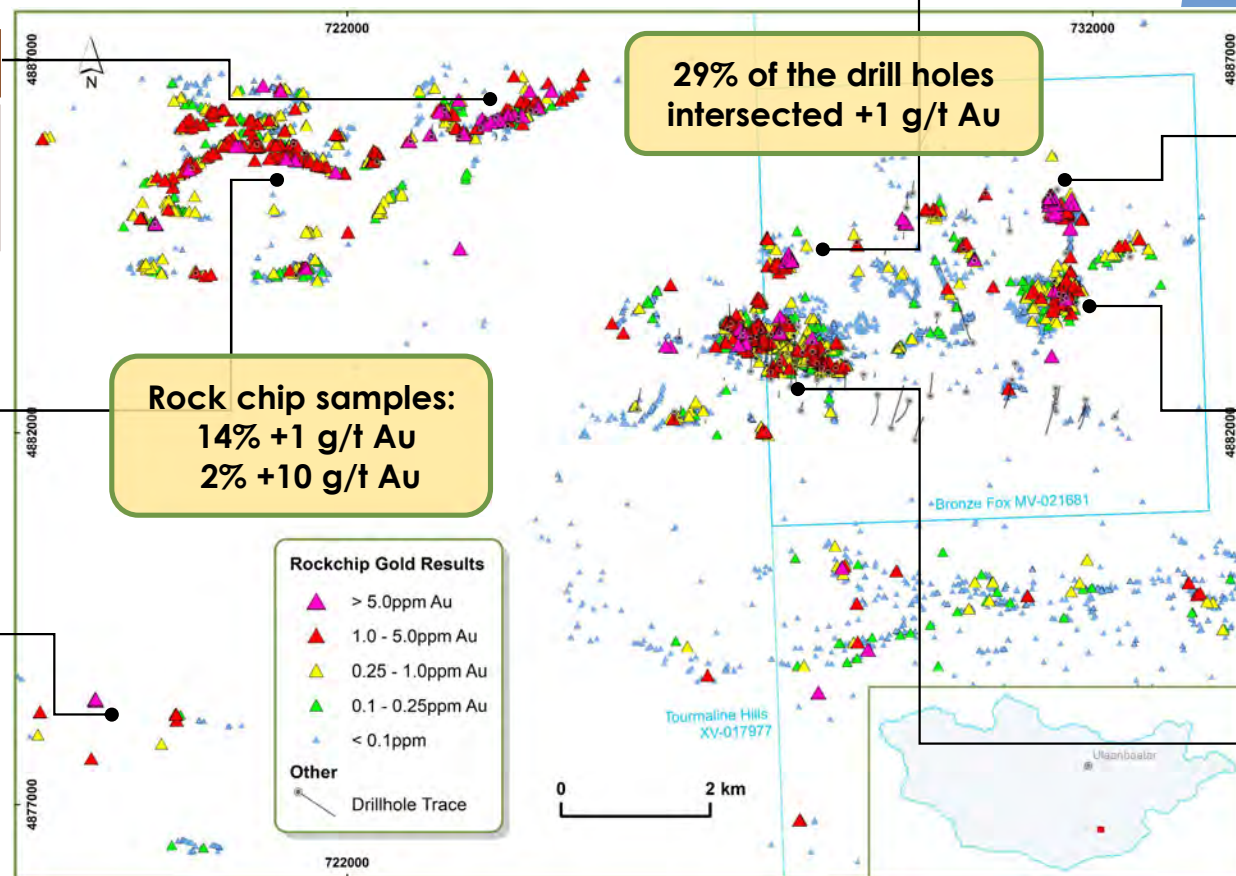
Tourmaline Hills

179 samples >1 g/t Au
(max 126 g/t), with Ag,
Cu, Pb

Southern Border Area

16 samples >1 g/t Au
(max 113 g/t), with Ag,
Mo, Pb, Zn

number of rock chips 4,566
number of drill holes 175



Sophie North

66 samples >1 g/t Au
(max 36 g/t), with Ag,
Cu, Pb, Zn

Buchanan Heights

135 samples >1 g/t Au
(max 109 g/t), with Ag,
Cu, Pb, Zn

Dunlop Fox

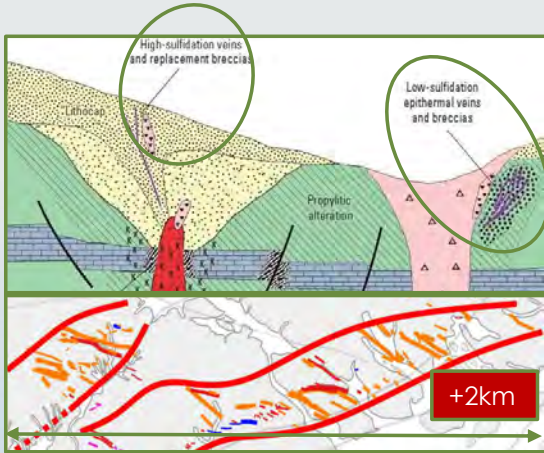
48 samples >1 g/t Au
(max 28 g/t), with Cu
(53 > 1%, max 10.9%),
Mo (max 726 ppm)

West Kasulu

270 samples >1 g/t Au
(max 46.5 g/t), with Ag,
Cu (275 > 1%, max
8.1%, Mo (max 3070
ppm), with Pb

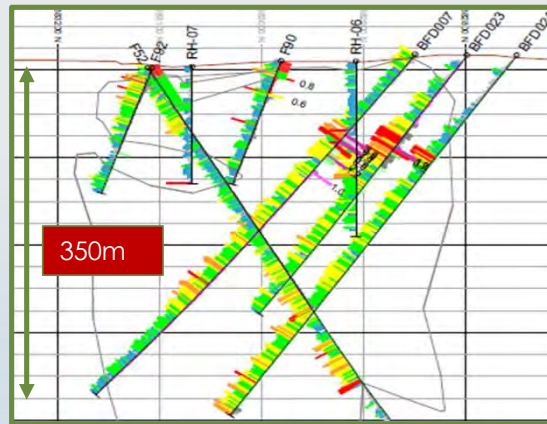


Next Two Years: Three Main Objectives



1 At Surface

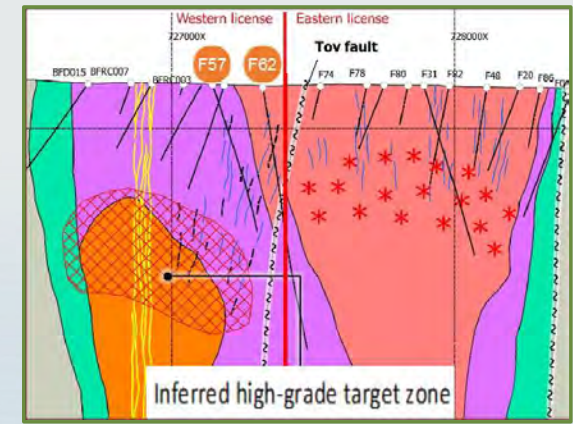
- Explore and define initial resources mainly up to 100m in depth



2 Kasulu Copper-Gold Porphyry Shallows

- Grow the exploration target and convert to an initial resource, mainly up to 350m in depth

Current block model above 350m is 466Kt Cu, 392koz Au



3 Kasulu Copper-Gold Porphyry Deeps

- JV with major to explore the deep porphyries; +500m in depth



Indicative use of capital over 2 years

Allocation	Amount (A\$)
Estimated Cash on Hand prior to offer	681,412
Capital Raised under the offer	5,000,000
Total Funds Available	5,681,412
Expenses of the Offer	798,829
Proposed Exploration Expenditure:	
Bronze Fox Project	958,100
Tourmaline Hills Project	1,527,700
Red Well Project	14,900
Total Proposed Exploration Expenditure	2,500,700
Administration costs	2,165,800
Working Capital	216,083
Total Budgeted Expenditure	5,681,412

Note use of capital is indicative only and subject to change prior to Prospectus being lodged





Kincora Agreement

Resilience and Kincora are merging their Mongolian assets to produce a vehicle to list RMM on the ASX. Binding Term Sheet executed

RMM to receive:

- 80% interest in Kincora's three South Gobi projects
- South Gobi White Pearl exploration camp
- Exclusive access to its proprietary project generation database
- Access to its in-country team of geologists, administrative staff and Ulaanbaatar office

Kincora to receive:

- 9.9% interest in listed RMM
- 20% free carried interest in its South Gobi projects until successful Pre-feasibility Study at Bronze Fox or Scoping Study at Tourmaline Hills, then 80%/20% JV to be formed
- Offer of 20% JV interest in any other project generated by RMM
- Seat on listed RMM Board





Investment Summary



Capital

- Raise funds via an ASX Listing



Exploration

- Begin Southern Gobi Copper-Gold Belt exploration; Explore and define initial resources near surface



Grow exploration target

- Kasulu Copper Gold Porphyry Shallows: Grow exploration target and convert to an initial resource, mainly up to 350m in depth



Joint venture with major

- Kasulu Copper Gold Porphyry Deeps: JV with major to explore the porphyry; 500m+ in depth





Contact Information

MARK STEWART

Executive Chairman, Resilience Mining Mongolia

Phone: +61 438 915 160

Email: mark.stewart@resiliencemongolia.com

GAVAN FARLAY

Director, Novus Capital

Phone: +61 420 520 300

Email: gavan.farley@novuscapital.com.au

TOM BOOTH

Advisor, Novus Capital

Phone: +61 403 103 410

Email: tom.booth@novuscapital.com.au

www.resiliencemongolia.com

Thank you





Resilience Mining Mongolia

Appendix



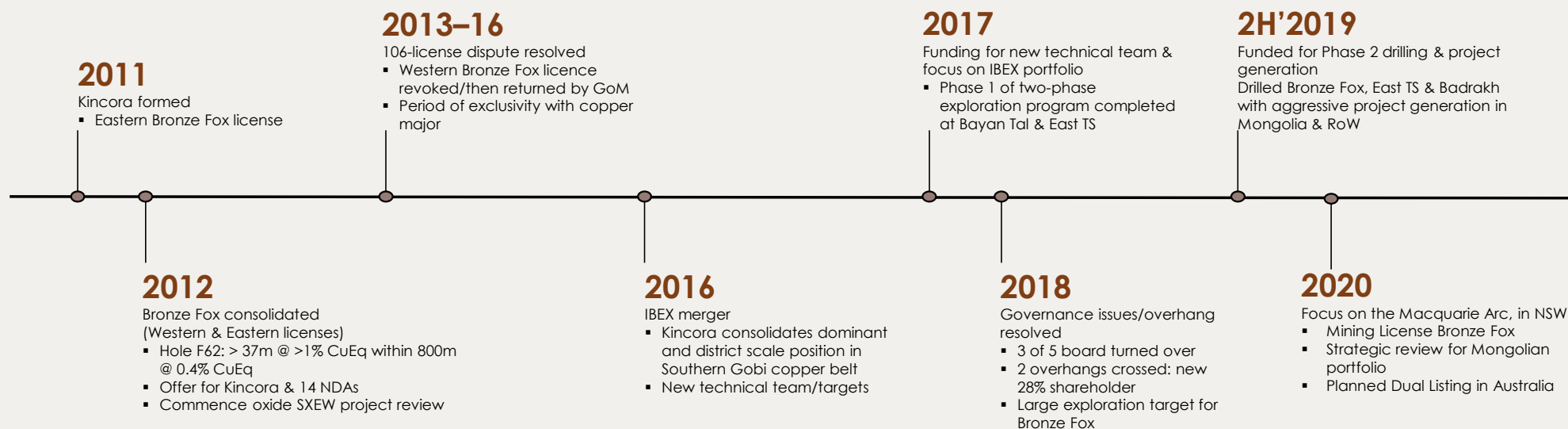
Project Overview





Kincora

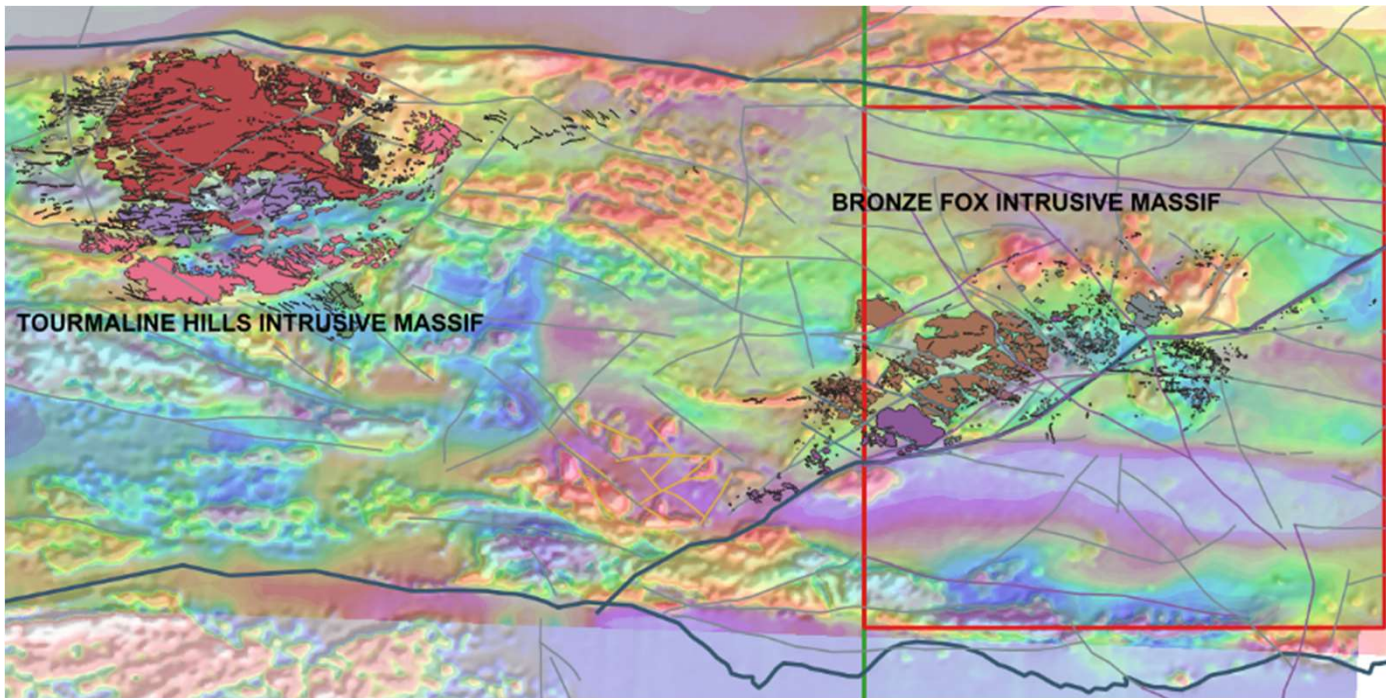
- Kincora is a junior explorer, seeking to discover a Tier 1 porphyry. Currently completing a dual listing on the ASX.
- Kincora's business model is "large scale porphyry and district-scale exploration*". In Mongolia, they explored and refined landholdings with the peak of 13 licenses covered 1,689km² (size of Ecuador) to 3 licenses covering 321km² (Malta). Kincora has now pivoted to one of the hottest regions for porphyries globally, the Macquarie Arc.
- Now resolved, the headwinds from 2013 till 2020 were: capital raising environment was tough for mining juniors; unfavourable commodity market cycle; poor market perception of Mongolia; license dispute; depressed metal price for most of the time; and corporate governance issues.





Geology

Intrusive massifs on combined total magnetic intensity and IP chargeability





Hydrothermal gold

TOTAL MAGNETIC INTENSITY

Colour scale from blue – magnetic low to red – magnetic high

Most of the gold-copper exploration targets (outlined yellow) are localized in areas of low magnetic response either between or on the flanks of magnetic highs. The magnetic lows probably reflect magnetite-destructive alteration, whilst magnetic highs indicate relative unaltered intrusive apices.

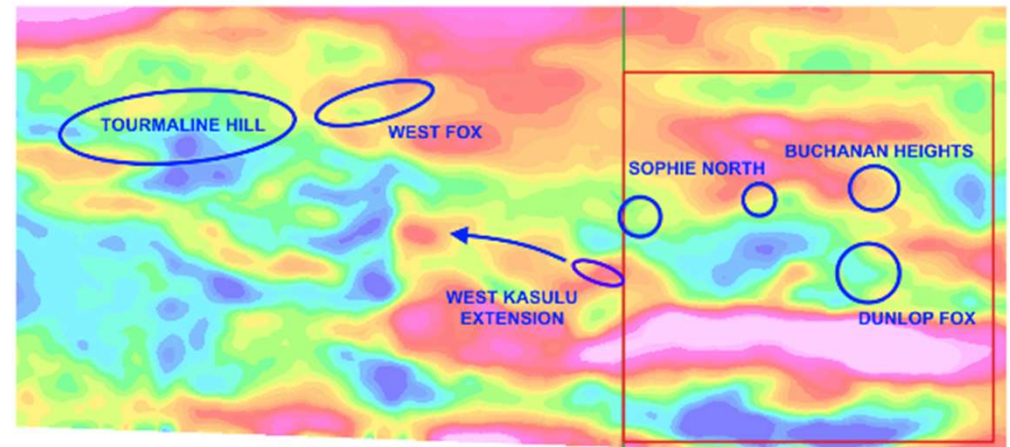
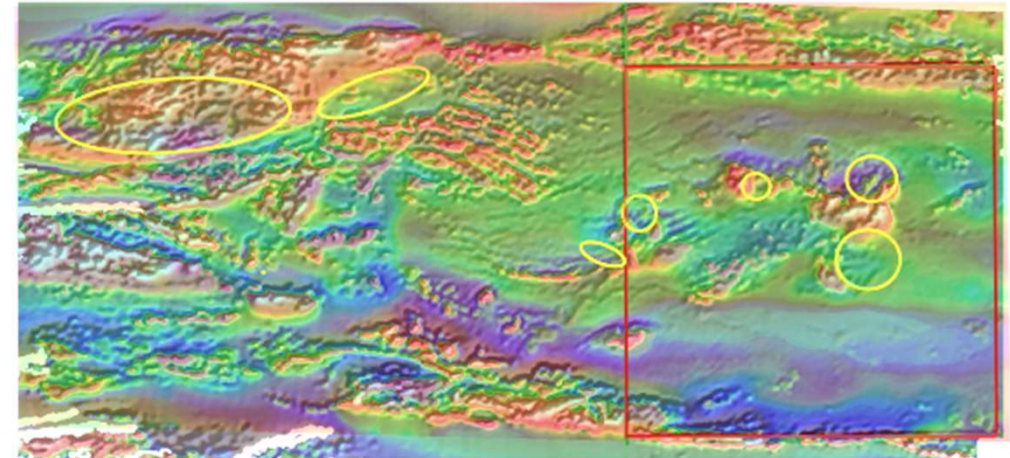
INDUCED POLARISATION (IP) CHARGEABILITY

Colour scale from blue – low chargeability to red/purple – high chargeability

All targets are located in areas of moderate chargeability.

Low chargeability responses in the central part of the Bronze Fox Intrusive Massif and in several places south of Tourmaline Hill may be due to potassic alteration; the latter may indicate an underlying intrusive.

The W-E trending high chargeability zone in the southern part of the Bronze Fox licence is due to pyrite +/- carbonaceous matter present within volcano-sedimentary rocks.





At Surface Gold: West Fox Prospect

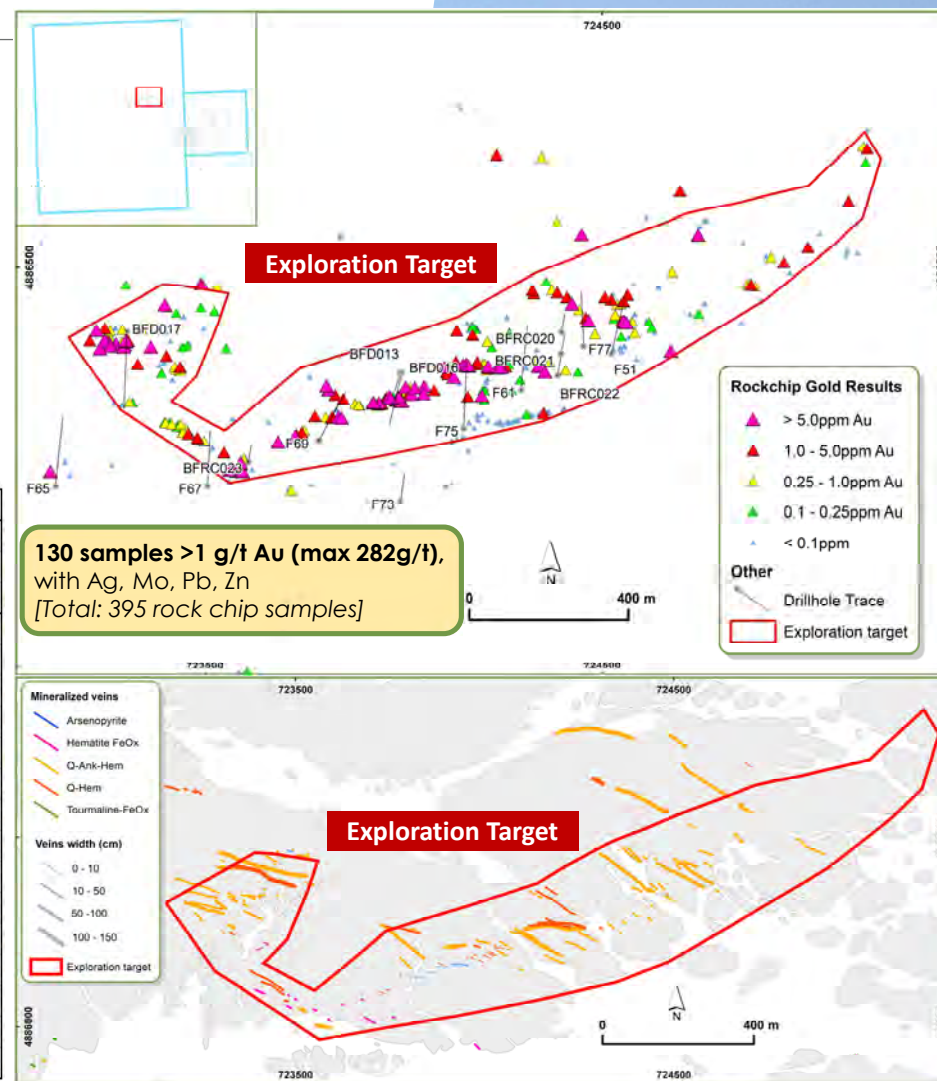
Objective: Explore and define initial resources, mainly up to 100m in depth

Drilling Highlights

DH ID	From m	Interval m	Au g/t	Ag g/t	Cu %	Pb %	Zn %
BFD017	56	4	0.33	2			
	242	2	0.34				
BFR023	21	3	1.34	3.1			0.11
	27	3	5.00	33.5	0.45		0.35
F69	52	4	3.28	4			
	69	4	1.82	5			
BFR021	17	1	0.43				
	23	2	1.92	9.1		0.22	0.39
	34	2	2.79	27.3	0.44	0.23	0.43
F61	39	1	2.74	38	0.42	0.17	6.38
	60	5	2.65	15.5		0.22	0.25
	72	1	1.02	5			
	77	3	1.09	3			
	89	1	0.58				
	155	1	5.35				
F75	178	2	0.83				
	181	1	0.59				
	183	1	0.33				
	187	2	1.09				

Rock Chip Highlights

Sample ID	Lithology	Au g/t	Ag ppm	As ppm	Cu %	Mo ppm	Pb %	Zn %
KCCRO18003		282.0	17.1	48	0.00	2.0	0.0	0.0
KCCRO20041	Volcaniclastic	118.0	60.6	>10000	0.33	33.1	0.4	0.1
KCCRO20012	Volcaniclastic	95.5	38.8	>10000	0.19	22.4	0.0	0.1
MR75926	Massive hematite	53.4	34.0	35700	0.29	33.0	0.5	0.1
MR75981	Siltstone	41.0	140.0	39600	0.09	17.0	7.6	0.4
MR75914	Volcanic siltstone	38.6	39.0	53000	0.02	8.0	0.3	0.0
MR75906	Quartz-hematite sheeted veins breccia	35.9	45.0	101000	0.04	43.0	0.1	0.0
MR75944	Massive-hematite vein	28.6	38.0	33300	0.29	25.0	0.1	0.1
MR75913	Quartz vein	27.7	96.0	7910	0.05	50.0	0.0	0.0
MR75883	Quartz-hematite vein breccia	26.9	40.0	76000	0.08	35.0	0.4	0.0
MR75909	Quartz-hematite vein	26.9	85.0	39900	0.03	47.0	0.1	0.0
MR75996	Massive hematite-carbonate vein	25.9	8.0	21100	0.08	31.0	0.0	0.0
MR91004	Hematite vein	25.4	13.0	72000	0.01	14.0	0.0	0.0
MR75882	Quartz-hematite vein breccia	21.9	26.0	115000	0.02	13.0	0.3	0.0
MR75935	Quartz-hematite vein breccia	20.9	10.0	77000	0.04	19.0	0.0	0.0
MR75903	Quartz vein	20.8	81.0	28400	0.02	44.0	0.5	0.0
MR75884	Quartz-hematite vein	20.5	51.0	80000	0.03	13.0	0.5	0.0
MR75876	Quartz-hematite vein breccia	20.0	141.0	67000	0.06	5.0	0.6	0.0





At Surface Gold: Dunlop Fox Prospect

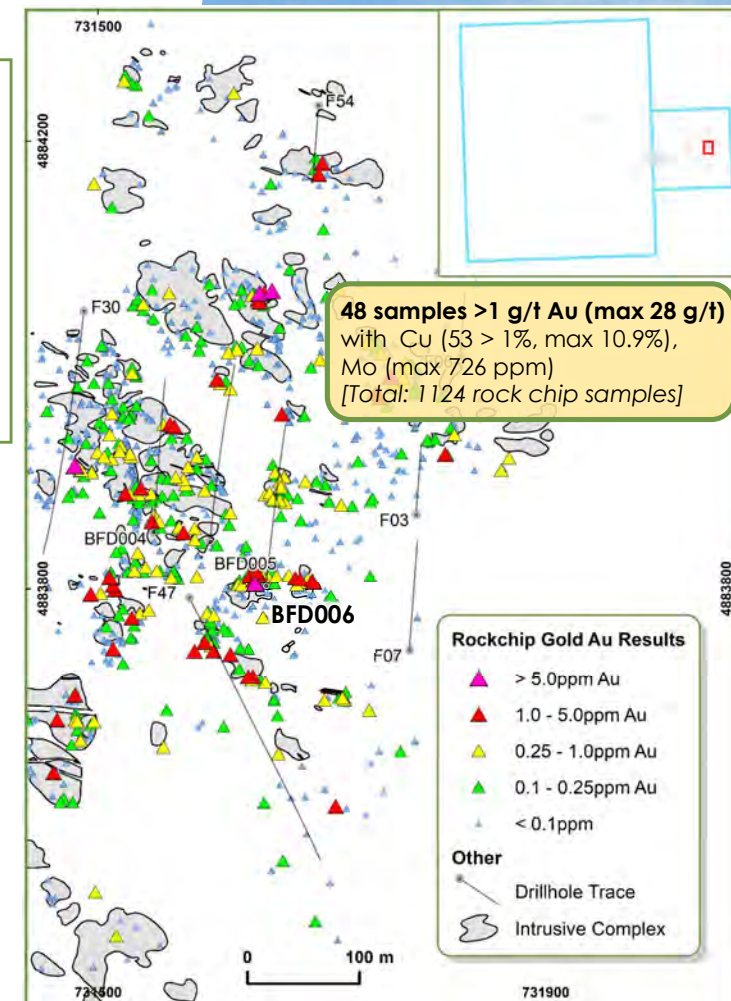
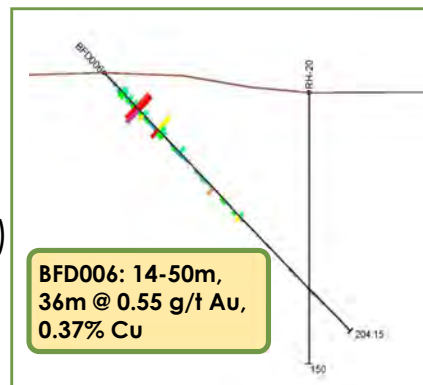
- ✓ Abundant med-high grade Au and high-grade Cu in rock chips
- ✓ Associated magnetic low (hydrothermal alteration)
- ✓ Drilling parallel to mineralisation trend
- ✓ Pattern shallow (<100m) geochem drilling required

Rock Chip Highlights

Sample	Lithology	Au g/t	Ag ppm	As ppm	Cu %	Mo ppm	Pb %	Zn %
MR41687	Andesite	27.7	3	300	6.7	639	39	156
MR74448	Quartz vein	10.3	13	480	7.1	66	101	308
MR88808	Gossan	9.1	6	495	0.8	54	40	435
MR88762	Sheeted quartz-hematite veinlets	7.4	5	115	2.2	10	25	41
MR88764	Sheeted quartz-hematite veinlets	5.4	3	95	1.8	5	19	38
MR74302	Mafic dyke	4.2	12	100	1.8	11	21	45
MR41704	Andesite	3.9	3	80	1.7	5	10	44
MR88765	Quartz vein	3.1	1	70	0.5	5	12	24
MR88809	Diorite	2.9	14	230	6.1	159	38	186
MR88845	Diorite	2.8	7	85	2.4	49	17	35
MR74130	Quartz vein	2.6	3	240	3.0	112	30	173
MR88863	Diorite	2.4	1	115	2.1	50	35	40
MR74441	Micro-Diorite	2.4	25	215	10.9	23	60	270
MR88854	Quartz vein	2.3	3	50	1.7	60	22	23
MR88892	Quartz vein	2.2	9	110	1.7	172	9	30
MR88861	Diorite	2.1	5	80	2.0	409	30	39
MR41718	Andesite	2.0	1	50	0.4	5	15	48
MR74179	Quartz vein	2.0	12	65	2.9	99	3	41

Drilling Highlights

Hole ID	Interval	Au g/t	Cu %
BFD005	106-108, 2m	0.78	0.04
BFD006	14-50, 36m	0.55	0.37
	incl 14-30, 16m	1.05	0.50
	incl 44-50, 6m	0.37	0.38
F47	30-45, 15m	0.30	0.39
F47	87-91, 4m	2.32	0.59
F47	303-307, 4m	0.27	0.36
F47	368-370, 2m	1.27	0.37





At Surface Gold: Buchanan Heights

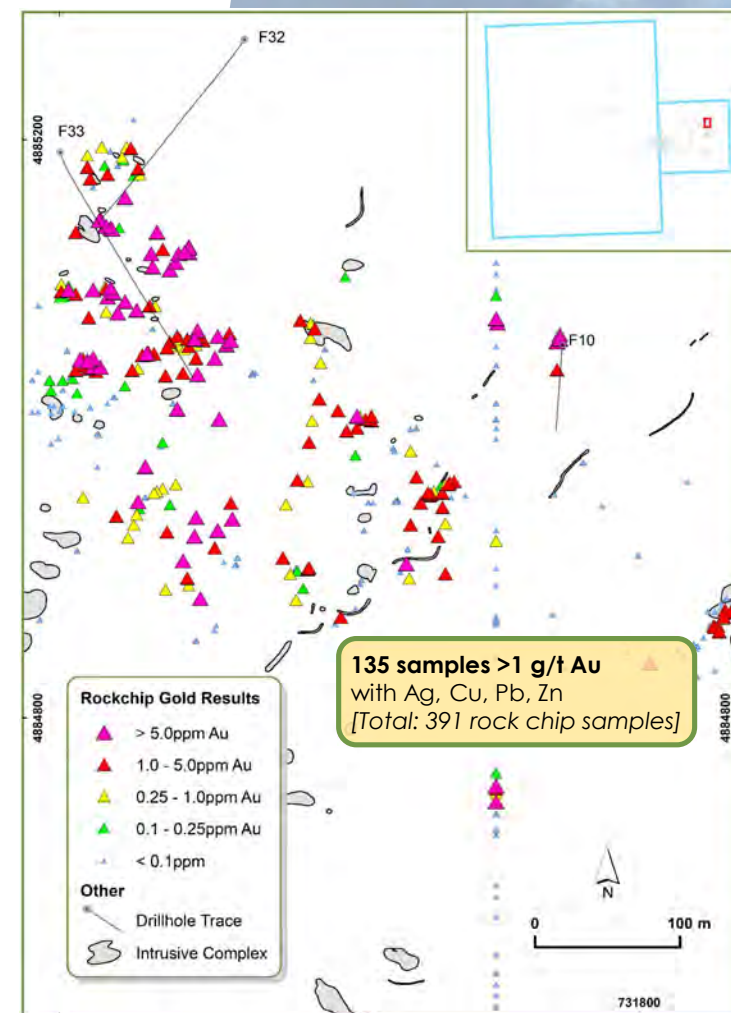
- ✓ Abundant high-grade Au in rockchips
- ✓ Associated magnetic low (hydrothermal alteration)
- ✓ Limited drilling to date
- ✓ Drilling parallel to strike
- ✓ Pattern shallow (<100m) geochem drilling required

Drilling Highlights

Hole ID	Interval	Au g/t	Cu %
F32	138-139, 1m	1.19	0.00
F32	200-201, 1m	2.13	0.18
F32	334-335, 1m	0.82	0.08
F33	53-68, 15m	0.23	0.05
F33	201-206, 5m	0.20	0.12

Rock Chip Highlights

Sample	Lithology	Au g/t	Ag ppm	As ppm	Cu %	Mo ppm	Pb %	Zn %
MR76465	Quartz vein breccia	109.0	361	28000	0.1	5	2.5	0.0
MR76468	Quartz vein breccia	83.0	31	1930	0.1	5	0.0	0.0
MR76422	Quartz-hematite vein	76.9	78	3830	0.2	49	1.5	0.1
MR76398	Quartz vein breccia	70.2	64	1720	0.1	5	0.0	0.0
MR73557	Gossan	67.5	91	2190	0.3	7	0.0	0.4
MR73579	Gossan	49.1	6	1150	11.2	21	0.1	0.4
MR73559	Breccia	43.1	18	1850	0.3	12	0.1	0.0
MR76469	Quartz vein breccia	40.7	106	1110	0.0	5	0.0	0.0
MR76463	Quartz-hematite vein	36.1	121	830	0.2	8	0.7	0.1
MR88531	Massive hematite vein	34.7	8	1220	10.6	22	0.2	0.5
MR76415	Quartz-hematite vein	32.4	46	3130	0.3	25	0.7	0.1
MR76425	Quartz-hematite vein	28.5	21	2380	0.7	20	0.9	0.3
MR76417	Quartz-hematite vein	28.2	19	4150	0.5	14	0.2	0.1
MR76399	Quartz vein breccia	25.7	81	2890	0.2	5	0.0	0.0
MR72271	Quartz vein	25.7	65	2160	0.1	5	0.0	0.0
MR76461	Quartz-hematite vein	23.7	40	2790	0.2	6	0.2	0.1
MR88547	Massive hematite	23.3	12	12300	2.3	49	0.1	0.1
MR88534	Quartz-hematite vein breccia	21.0	53	970	0.2	44	0.1	0.4
MR76458	Quartz-hematite vein	20.6	23	1980	0.4	8	0.4	0.1
MR88537	Quartz-hematite vein breccia	20.1	17	1630	0.3	16	0.0	0.3
MR88516	Quartz-hematite vein breccia	19.2	24	17800	0.6	16	0.9	0.3
MR88511	Quartz-hematite vein breccia	19.1	18	8870	0.4	12	0.0	0.3
MR76405	Quartz vein breccia	19.0	135	1530	0.1	6	0.2	0.0
MR72272	Quartz vein	18.9	103	950	0.1	5	0.0	0.0
MR76491	Quartz-hematite vein	17.3	6	18100	3.2	20	0.0	0.0
MR73586	Quartz Monzoniorite	16.3	8	570	1.0	5	0.1	0.0
MR73555	Quartz vein	14.0	6	625	1.8	5	0.0	0.1
MR88515	Quartz-hematite vein breccia	13.4	15	12700	0.5	17	0.5	0.3
MR88552	Massive hem-actinolite-quartz vein	13.0	8	1020	8.0	12	0.1	0.4
MR76488	Quartz-hematite vein	12.9	12	6530	0.7	7	0.0	0.0
MR73569	Quartz vein	11.7	13	1890	4.5	15	0.0	0.1
MR76492	Quartz-hematite vein	11.4	8	1650	0.4	5	0.1	0.2
MR73989	Quartz-hematite vein	11.4	2	5540	0.2	27	0.0	0.0
MR76479	Quartz-hematite vein	10.8	11	410	0.4	5	0.0	0.0
MR76490	Quartz-hematite vein	10.7	5	1570	2.5	10	0.0	0.1
MR73578	Quartz Monzoniorite	10.3	6	915	7.5	8	0.1	0.5



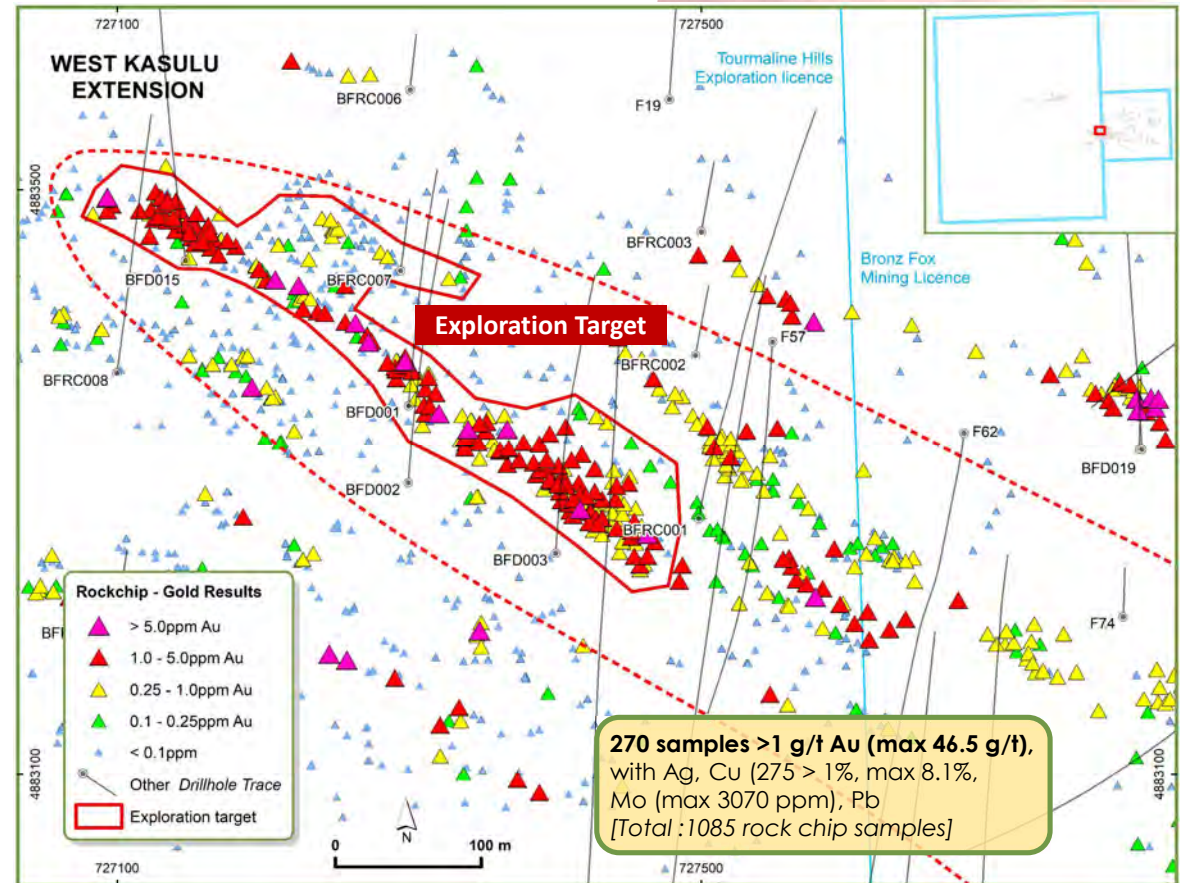
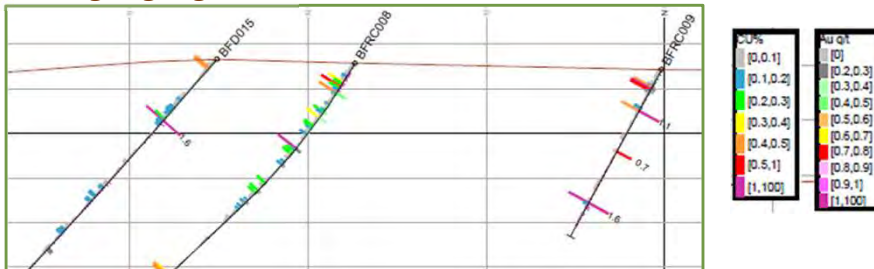


At Surface Gold: West Kasulu Extension

Rock Chip Highlights

Sample	Lithology	Au g/t	Ag ppm	As ppm	Cu %	Mo ppm	Pb %	Zn %
MR41461	Quartz-hematite vein	47	71	975	3.3	596	0.1	0.0
MR57505	Quartz vein	25	3	4380	0.0	5	0.2	0.0
MR76978	Diorite	18	1	9610	0.3	28	0.3	0.0
MR71695	Quartz vein	14	45	20500	2.0	85	0.0	0.2
MR41460	Quartz-hematite vein	12	23	650	1.5	443	0.1	0.0
MR41465	Quartz-hematite vein	12	92	970	2.9	1170	0.0	0.0
MR41328	Quartz vein	12	26	6530	0.8	263	0.4	0.0
MR57509	Quartz vein	12	12	9680	0.1	11	0.3	0.1
MR74995	Quartz vein	12	17	6780	0.6	459	0.4	0.0
MR71696	Quartz vein	11	40	9400	0.8	615	0.0	0.1
MR71929	Hematite-quartz Vein	10	43	30800	0.2	72	0.0	0.0
MR75655	Quartz-hematite vein	10	17	25000	2.3	385	0.6	0.1
MR75502	Quartz-hematite vein	9.6	20	18000	0.4	667	5.5	0.0

Drilling Highlights



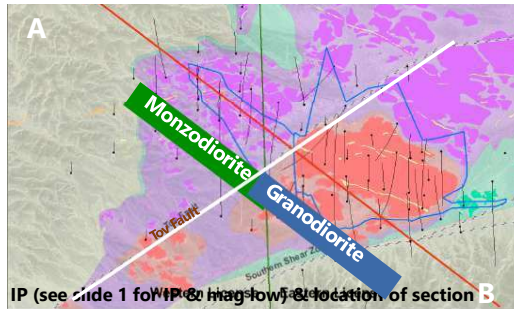


Copper-Gold Porphyry Deeps

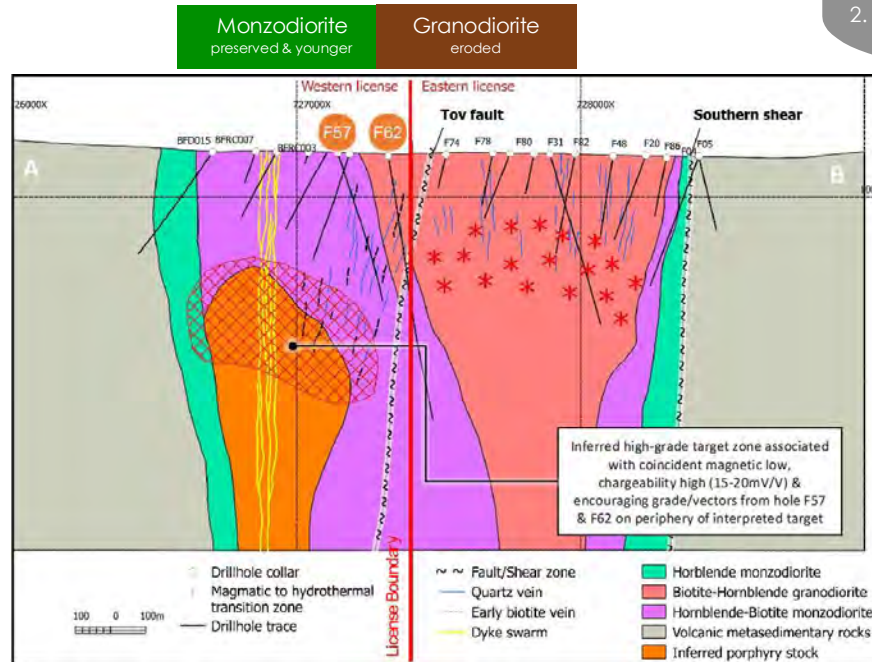
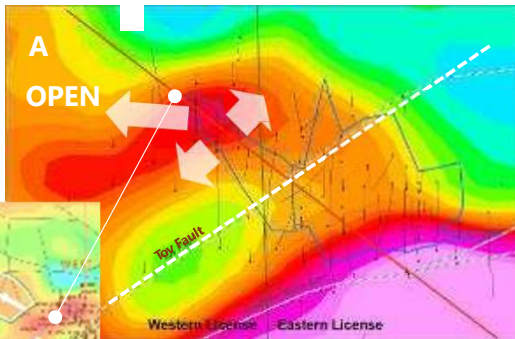
Objective: Joint Venture partnership to explore the deep porphyries; +500m in depth

1. Locate and outline the high grade core of the porphyry's
2. Exploration +500m depth

Outcrop & location of section

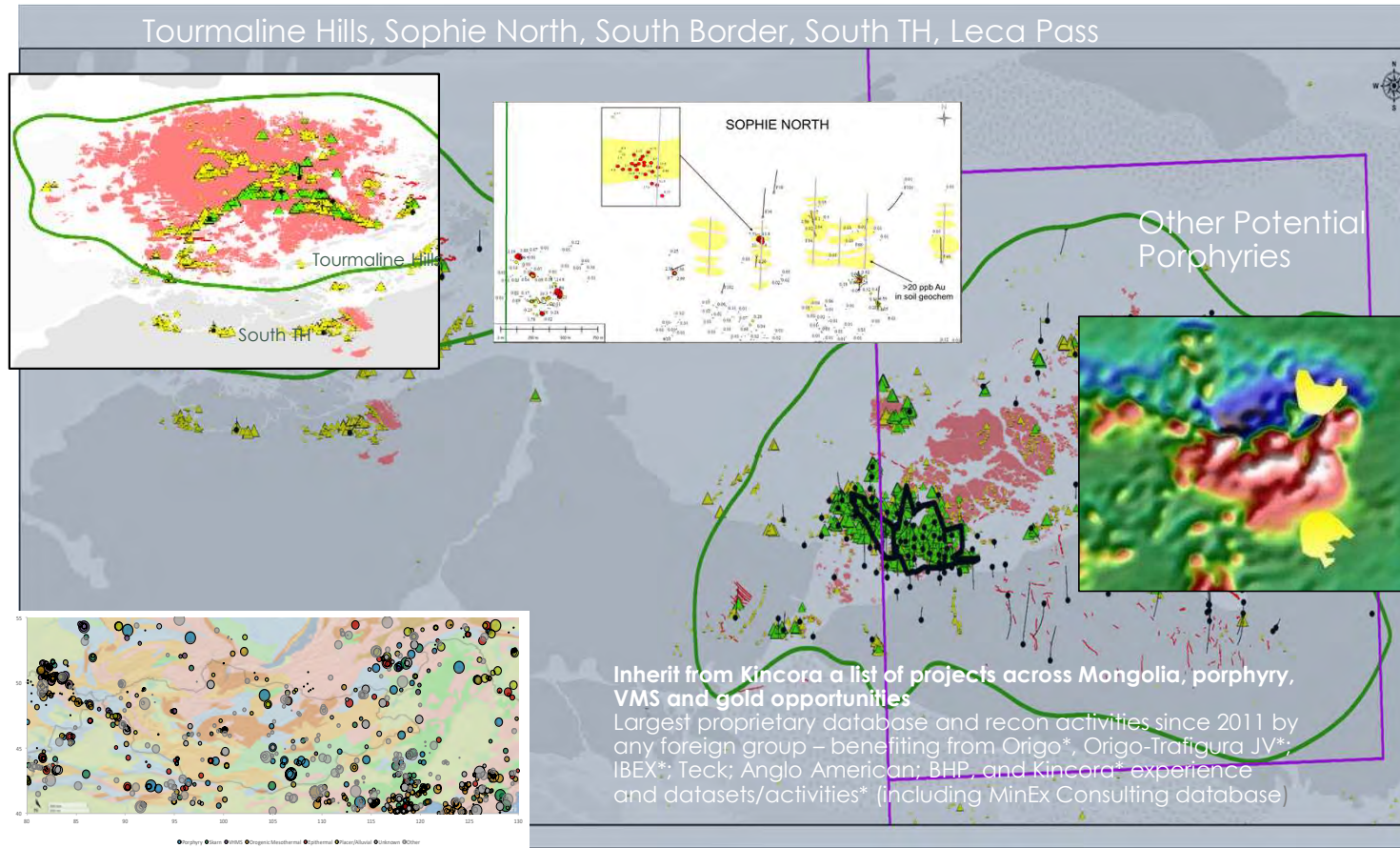


Chargeability high





Pipeline Projects





White Pearl Camp

- White Pearl camp included within deal with Kincora
- Provides Resilience with a base for exploration across the project area

